

SUBJECT: Interface Kit Type A CE Mark Compliance

DATE: December
31, '95
PAGE: 1 of 9PREPARED BY: N. Kaiya
CHECKED BY:

FROM: 2nd Technical Support Section

CLASSIFICATION:

☐ Action Required☐ Troubleshooting☐ Retrofit Information☒ Revision of service manual☐ Information only☐ Other

MODEL:

Interface Kit Type A
for DFC - α

To comply with the CE mark standards, the following modifications have been made to the Interface Kit Type A.

<Ferite Core>

Two ferrite cores are packed with the kit. Please refer to the attached installation procedure of the interface kit for where to use these ferrite cores.

<Main Board ROMs>

The mainboard ROMs packed with the interface kit have been standardized with the main board ROM on the copier main board.

A3996782 --> A1095104

A3996783 --> A1095106

At the same time, the ROMs have been updated from suffix L to suffix M.

A1095104L --> A1095104M

A1095106L --> A1095106M

The purpose of this update is to cut the signal from the scanner unit to the IPU when using the copier in scanner mode. This will reduce the amount of electromagnetic emission from the copier.

<CE Mark>

The CE mark is printed on the carton box. Please check this CE mark to distinguish new kits from old kits, since there is no serial number for this kit.

SUBJECT: Interface Kit Type A CE Mark Compliance

DATE: December
31, '95

PAGE: 2 of 9

A5838520B

**CONTROLLER INTERFACE KIT
TYPE-A
(Machine Code: A583-01)
INSTALLATION PROCEDURE
For Machine Code: A109**

NOTE: THE CONTROLLER INTERFACE KIT MUST BE INSTALLED BY
A CUSTOMER SERVICE REPRESENTATIVE WHO HAS
COMPLETED THE TRAINING COURSES ON THE BASE
COPIERS AND THE CONTROLLER.

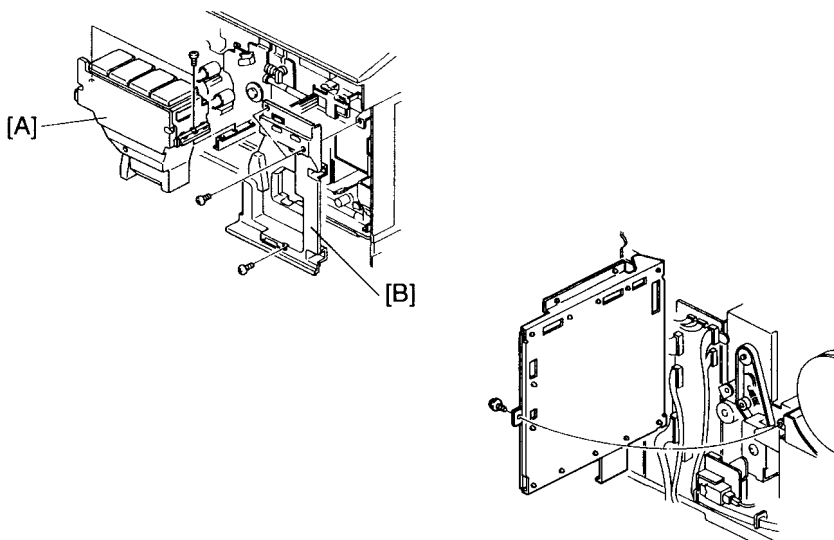
SUBJECT: Interface Kit Type A CE Mark Compliance

DATE: December
31, '95

PAGE: 3 of 9

INSTALLATION PROCEDURE

1. Remove the covers.



⚠ CAUTION

Turn off the main switch and unplug the machine before starting the following procedure.

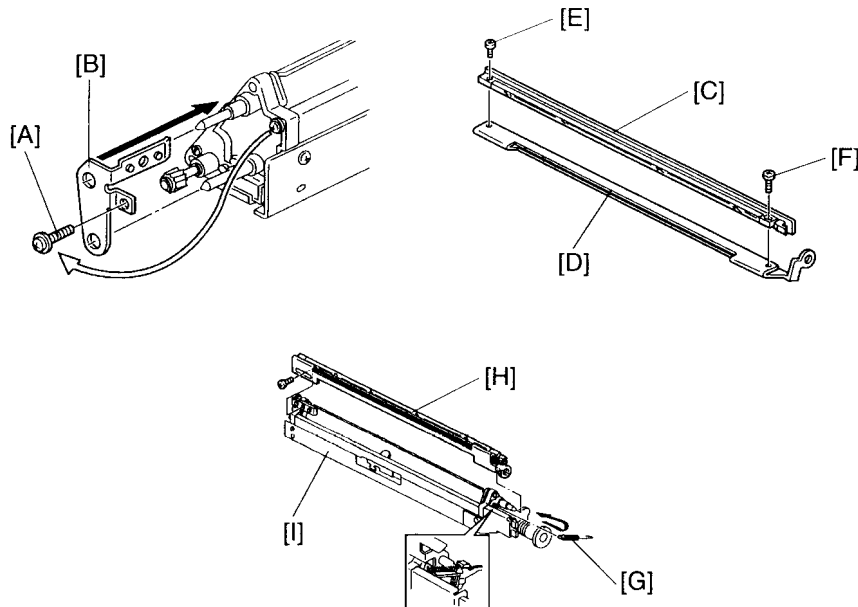
1. Open the front doors and remove the toner tank unit [A] (2 screws).
2. Remove the right inner cover [B] (3 screws).
3. Remove the upper rear cover (4 screws).
4. Remove the lower rear cover (4 screws).

SUBJECT: Interface Kit Type A CE Mark Compliance

DATE: December
31, '95

PAGE: 4 of 9

2. Attach the PTL (Pre-Transfer Lamp) to the belt cleaning unit.



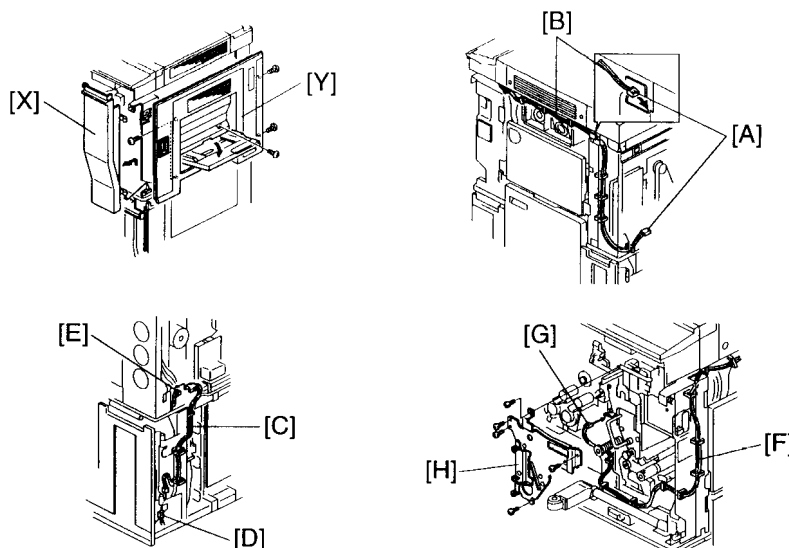
1. Lower the toner collection duct (1 hook).
2. Disconnect the three connectors and free them from the three harness clamps.
3. Remove the transfer belt stay (5 screws).
4. Remove the belt cleaning unit by pulling it out.
5. Remove the screw [A] on the rear plate of the unit.
6. Attach the PTL bracket [B] with this screw [A].
7. Attach the PTL (LED array) [C] to the PTL stay [D] (M3x8 [E] ,stepped screw-M3 [F]).
8. Remove the release spring [G].
9. Attach the PTL stay/LED array assembly [H] to the cleaning unit [I] (M4x6 screw).
10. Reset the release spring [G].

NOTE: Don't set the release spring the wrong way round.

SUBJECT: Interface Kit Type A CE Mark Compliance

DATE: December
31, '95
PAGE: 5 of 9

3. Route the PTL harness and attach the belt cleaning unit.



1. The following machines are not equipped with the PTL harness and the PTL relay harness. Therefore perform from the following steps. If the harnesses are already installed, skip to step 6.

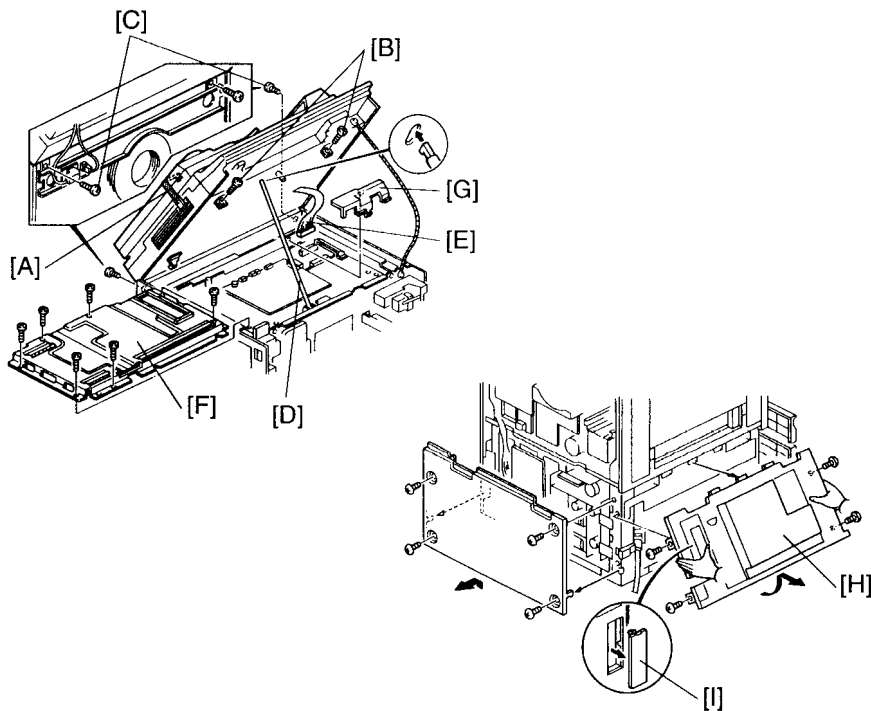
Machine Code	A109-17	A109-22	A109-26	A109-27
Serial No.	less than A3514090001	less than 6794090001	less than 3E50940001	less than A3514090383

2. Remove the right front door [X] and the upper right cover [Y] (5 screws).
3. Route the white connector end [A] of the PTL harness [B] from the upper rear right side of machine through to the rear as shown in the diagram (8 clamps).
4. Run the PTL relay harness [C] (3 clamps) down the rear side and connect it to the connector [D] and the PTL harness [E].
5. Route the PTL harness [F] through the front side of the machine (8 clamps).
6. Reinstall the belt cleaning unit and connect it to the PTL harness [G].
7. Reinstall the transfer belt stay [H] (5 screws, 3 connectors and 3 clamps).
NOTE: Install the connector of the PTL unit before reattaching the transfer belt stay. Also, disconnect it after removing the transfer belt stay.
8. Reinstall the toner collection duct (1 hook).

SUBJECT: Interface Kit Type A CE Mark Compliance

DATE: December
31, '95

PAGE: 6 of 9

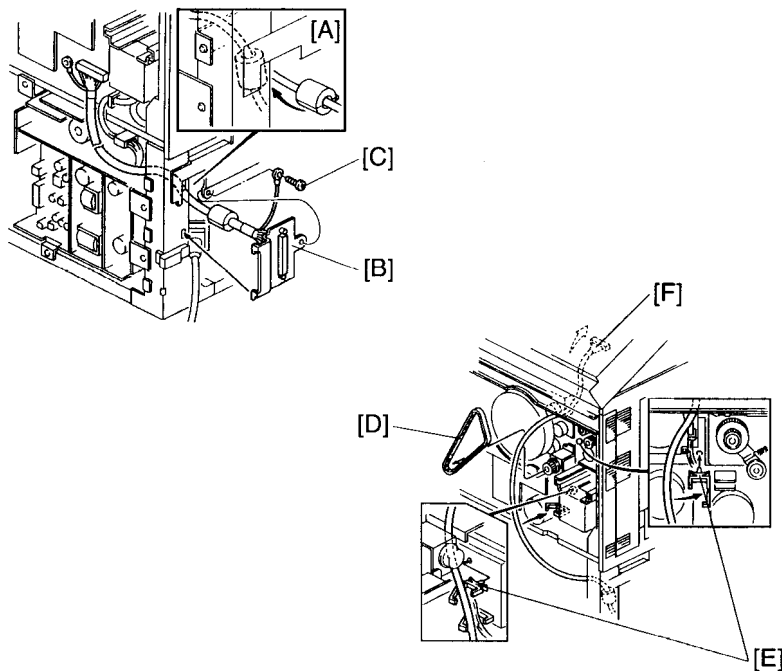
4. Install the interface board and harness.

1. If the DJF is equipped on the copier, secure the DJF to the scanner unit with the DJF fixing belt [A] as shown.
If the Film Projector Unit is installed on the copier, remove the mirror unit.
2. Remove the two fixing screws [B] at the front of the scanner unit.
3. Remove the two fixing screws [C] at the rear of the scanner unit.
4. Open the scanner unit and set the scanner support bar [D] as shown.
5. Disconnect the shielded flat cable [E] and remove the IPU board cover [F] (2 long and 5 short screws).
6. Remove the harness cover [G] from the right rear corner.
7. Remove the lower left cover [H] (4 screws). Then remove the cap [I] from the lower left cover.

SUBJECT: Interface Kit Type A CE Mark Compliance

DATE: December
31, '95

PAGE: 7 of 9



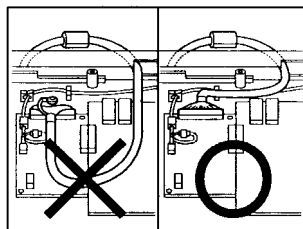
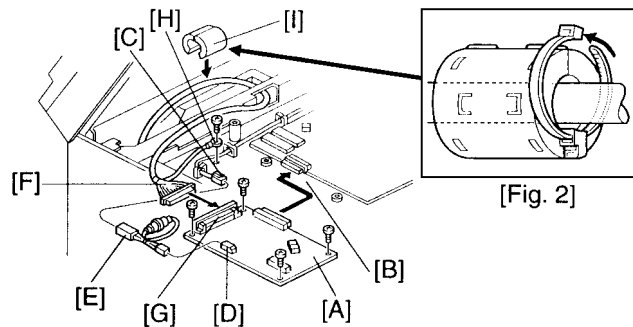
8. Route the harness above the left rail of the 1st tray [A] from the left side to the rear.
9. Place the controller interface harness bracket [B] on the left side frame and secure it with the grounding wire (1 screw) [C].
10. Remove the timing belt [D] and install the two harness clamps [E].
11. Route the harness from the lower to the upper as shown [F].

NOTE: Route the harness behind the charge inlet fan duct.

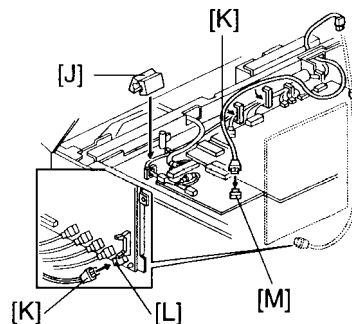
SUBJECT: Interface Kit Type A CE Mark Compliance

DATE: December
31, '95

PAGE: 8 of 9



[Fig. 1]



12. Install the controller interface board [A] by connecting it to CN308 [B] of the IPU board (4 screws).
13. Connect the white 2P connector [C] to CN301 [D] of the controller interface board via the fuse harness [E].
14. Connect the controller interface harness [F] to CN303 [G] of the controller interface board. Then secure the grounding wire [H] to the IPU board bracket (1 screw).

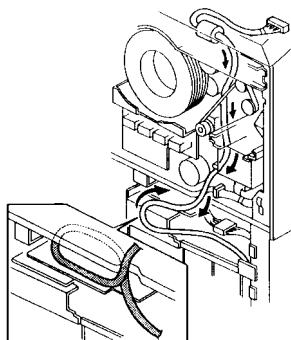
NOTE: 1. Do not route the harness over the board to prevent electromagnetic wave. (See [Fig. 1])

2. Make sure that the connectors are set properly. Otherwise, the copier might not achieve the ready condition or blank copies might be made.
15. Install the gray ferrite core [I] and the white ferrite core [J] as shown.

NOTE: Secure the gray ferrite core with the harness band as shown [Fig. 2].
16. Connect the fiber optics cable [K] to CN514 [L] on the main control board and route it to the IPU board area following other fiber cables.
17. Run the fiber optics cable through the harness clamps and connect it to CN304 [M] on the controller interface board.

SUBJECT: Interface Kit Type A CE Mark Compliance

DATE: December
31, '95
PAGE: 9 of 9



18. Secure the interface harness with the three harness clamps and reinstall the timing belt as shown.

NOTE: Route the remaining part of the harness along the top of the AC/DC Drive Board as shown. Position the harness near by the rear side plate so that the harness won't touch any moving parts such as timing belts and motors.

5. Replace ROMs and reassemble.

1. Replace the IPU ROM chips, in accordance with the IPU Board P/N.

IPU P/N IC No.	A1095510	A1095515	A1095519
IC303	V.1.72	A1095517C or later *	Do not replace IC303.
IC309	V.1.72	A1095518C or later *	Do not replace IC309.

*: If the suffix of the copier ROM chips are later than ROM chip P/Ns in the kit, leave the chips as they are.

2. Replace the main ROM chips in accordance with the following table.

IC509	A1095104M or later *
IC522	A1095106M or later *

*: If the suffix of the copier ROM chips are later than ROM chip P/Ns in the kit, leave the chips as they are.

3. Re-assemble the machine.

6. Connect to the Fiery and adjust the printer gamma.

1. Connect the Fiery controller to the controller interface connector with the cable provided from EFI.
2. Adjust the γ correction data for printer and check the controller function according to the service manuals.